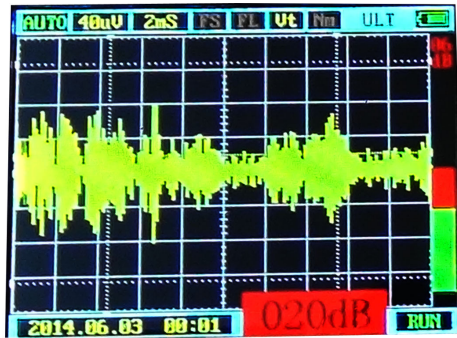




# KPM Duo PD

TEV + ULTRASONIC



Real Time PD Display with Color Indications

- Red** : Serious PD
- Yellow** : Mid PD Activity
- Green** : Acceptable level



Partial discharge is a source of physical phenomena such as ultrasonic waves, heat, light, and magnetism etc. Ultrasonic waves is centered on the sound source and propagate to the surroundings in the form of spherical waves. KPM Duo PD is a handheld partial discharge tester which uses the ultrasonic signal generated by partial discharge to determine the existence and location of partial discharge and combines the real-time displayed images and data to quickly diagnose partial discharge conditions. KPM Duo PD tester integrates two detection methods: transient ground voltage and ultrasonic wave.



# KPM Duo PD, Handheld PD monitoring system

## Features :

- Ultrasound and TEV partial discharge waveforms are on the same interface as yellow, green and red warning values.
  - Use dBmV as the unit and use transient ground voltage (TEV) to detect the size of partial discharge.
  - Using color LCD screen, the display effect is more intuitive and friendly.
  - Added headphone monitoring mode. In ultrasonic mode, real-time monitoring of PD signals can be achieved through headphones.
  - The display can display waveforms at all times and can store valuable waveforms. The test data is automatically stored, which is beneficial to the review of test records and subsequent analysis of test data.
  - Large signal amplification and high sensitivity; signal receiving range: effective distance 30m.
  - The red laser with moderate intensity is accurate, has strong focusing ability, accurate positioning, is safe and reliable.
- The setup is simple and practical to use.
- Discover and locate insulator discharge on the tower, creepage on the open-air cable head, and partial discharge on the underground cable.

- Detect partial discharge of high-voltage switch cabinet.
- Easy to use, small in size, light in weight and easy to carry.

## TEV performance parameters -:

- Sensor: Capacitive;
- Measurement range: -5~60dB, step 1dB;
- Resolution: 1dB.

## Ultrasonic measurement parameters -:

- Measurement range: -11dB~68dB, step size 1dB;
- Resolution: 1dB;
- Sensor center frequency: 40kHz  $\pm$  1kHz;
- Sensor diameter: 16mm.

## Instrument hardware specifications

- Sensor diameter: 16mm;
- Parabolic reflector outer diameter: 275mm;
- Parabolic reflector standard diameter: 250mm;
- Weight: 0.6 kg;
- Working temperature: -10 - 50 °C;
- Humidity: 0 -90 % relative humidity, no condensation



# KPM Duo PD, Handheld PD monitoring system

## Hardware Specifications - :

- Indicator: Color backlit LCD
- Display resolution: 320X240;
- Lateral sensitivity: 50us/Div ~2m s/Div;
- Vertical sensitivity: 4uv/Div ~400uv/Div (ultrasonic); 400uv/Div ~40mv/Div (TEV);
- Trigger mode: Auto, Norm, Sign;
- PC connection interface: USB connection;
- Charging method: special charger;
- Data storage: supports SD card storage;
- Operating time: Each set can be used for 4 to 5 hours after full charging;
- Controller: membrane keyboard;
- Connector: 2.1mm low voltage DC charger input;
- 3.5mm stereo headphone socket;
- External ultrasonic sensor input;
- Headphones: 8 ohms minimum.

## Working environment

- Working temperature: -10 ~ 45 °C;
- Humidity: 0 -90 % RH no condensation;

## Dimensions

- Size: main machine 245\*132\*45 mm; paraboloid diameter: 275mm;
- Weight: 1kg (host) 0.5kg (sensor);

## Battery charger

- Rated voltage: 90 ~ 264V AC;
- Frequency: 47 - 63Hz;
- Charging voltage: 12V DC;
- Charging current: 500 mA;
- Time required for full charge: 5 hours

## External parabolic ultrasonic sensor parameters

- Sensor center frequency: 40 kHz;
- Sensor center frequency: 40 kHz;
- Sensor diameter: 16mm;
- Parabolic reflector outer diameter: 275mm;
- Parabolic reflector standard diameter: 250mm;
- Weight: 0.6 kg;
- Working temperature: -10 - 50 °C;
- Humidity: 0 -90 % relative humidity, no condensation

### Standard Configuration

S.No	Name	Quantity
1	Host	1 Nos
2	External sensor	1 Nos
3	Special charger	1 Nos
4	Special headphones	1 Nos
5	Dedicated data cable	1 Nos
6	Operation Manual	1 Nos
7	Certificate/warranty card	1 Nos



Website : [www.kpmtek.com](http://www.kpmtek.com)  
E Mail : [sales@kpmtek.com](mailto:sales@kpmtek.com)  
Phone No : +91 124 4001088