

## KPM BDL - Battery Data Logger

Wireless Monitor for *string voltage, cell voltage, current and temperature* Customer tailored solutions...



It is recommended by IEEE standards like IEEE 450, IEEE 1188 and IEEE 1106 to check battery voltage, current and temperature monthly or quarterly. It is also much more time saving to record these data during battery charge or discharge.

KPM BDL is updated Battery Data Logger to meet these tasks exactly. For different battery systems, it has customized configuration from 12V to 700V. And it has easy expansion for all battery systems. With wifi communication, you could easily view complete data generate test report in the PC software.

### Feature

- Small weight modular design and very easy to install and operate
- It tests all battery types of 1.2V, 2V, 6V and 12V
- Simple wifi communication between battery data logger and PC
- Simultaneously monitor cell voltage, string voltage, current & temperature
- Data is automatically saved in PC, no need extra data transfer
- Work with battery charger or load bank to reflect complete battery status
- One Cell Data Logger is connected with up to 12 cells, save your time and money
- Could be used as temporary voltage monitoring or as permanent battery monitor
- Direct powered by battery, no need for extra power supply
- Good price with complete measurement functions

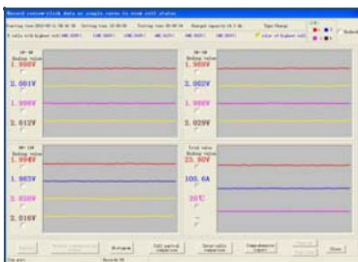
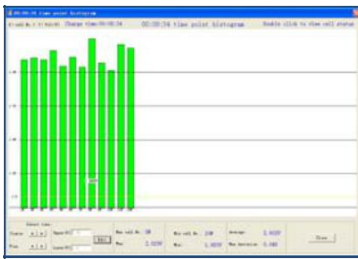
### Technical Specification

Item	Testing Range	Accuracy
Cell voltage	0~16V	±0.5%
String voltage	12~700V (customized)	±0.5%
Current testing	0~1000A (customized CT)	±1%
Temperature measurement	-25~55°C	±1°C
Power supply	Cell Data Logger (CDL)	10-90V from battery
	String Data Logger (SDL)	DC24V±15% from battery
PC software	Two functions: Monitor and data management	
Communication	wifi	
Communication distance between PC and data logger	0-300m (Router with LAN), 0-50m (Router with wifi)	
Communication frequency	2.4GHz	
Weight	0.15 kg/per module	
Size	28×80×110 mm	
Warning for	Communication disconnection, Over voltage and Low voltage	
Working environment	Temperature: 0~55°C Relative humidity: ≤85%RH	
Data sampling interval	0.1 second/point	

String Data Logger (SDL)

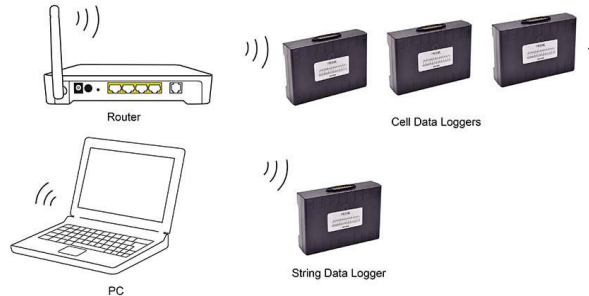


### PC Software



### Composition

The BDL is simply composed of 3 parts: Cell Data Logger (CDL), String Data Logger (SDL) and Router. CDL and SDL can work together or individually as per different requirement.



#### Cell Data Logger (CDL) >>>

It monitors voltage of each cell in real time. For different battery system, depending on different battery systems, each battery string will require different amount of CDL. Each CDL is connected with up to 12 cells of 1.2V, 2V, 6V and 12V.

#### String Data Logger (SDL) >>>

Each battery string will only need ONE SDL.

It monitors string voltage, string current (optional with CT) and ambient temperature. Each SDL will come with a customized current sensor for testing string current.

#### Router

A router is connected with PC via LAN or Wifi. It is for receiving all measurement data from CDL and SDL.

#### Optional Current Transducer (CT) >>>

Optional part connected with SDL for monitoring of string current value.

### Order information

Model	Battery System	Amount of CDL	Cell Type
SDL-48	48V	with 2 x CDL	2V, 6V and 12V
SDL-110	110V	with 5 x CDL	2V, 6V and 12V
SDL-220	220V	with 9 x CDL	2V, 6V and 12V
SDL-220-1	220V	with 2 x CDL	12V only
SDL-380	380V	with 16 x CDL	2V, 6V and 12V
SDL-380-1	380V	with 3 x CDL	12V only



Optional Current Transducer

1. All above standard units also include 1 x SDL and PC software.
2. All standard units are for measurement cell type of 2V, 6V and 12V. Measurement of 1.2V batteries is optional.
3. Customized model available upon request.