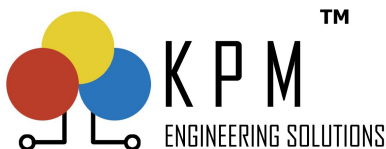




KPM's Clamp Earth Tester (KPM-CET1200)

KPM-CET1200 Clamp Earth Resistance Tester is widely used for ground resistance measurement, loop resistance measurement in fields such as electric power, telecommunications, meteorology, oil field, architecture and industrial electrical equipment, etc. With KPM-CET1200 there is no need to disconnect the ground wire & tests are conducted without use of auxiliary electrode making testing safe and fast.

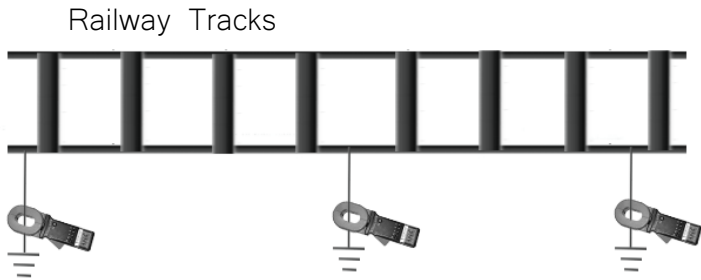
KPM-CET1200 Clamp Earth Resistance Tester can measure the ground fault which can not be measured by traditional method. KPM-CET1200 Clamp Earth Resistance Tester measures the integrated value of ground resistance and resistance lead.



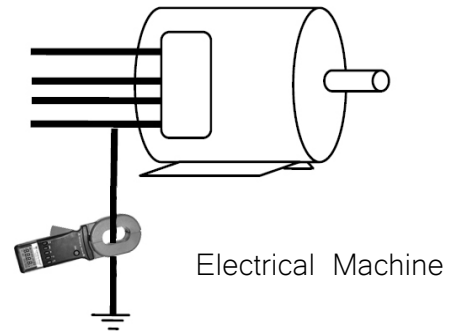
KPM's Clamp Earth Tester (KPM-CET1200)

Application Diagrams:

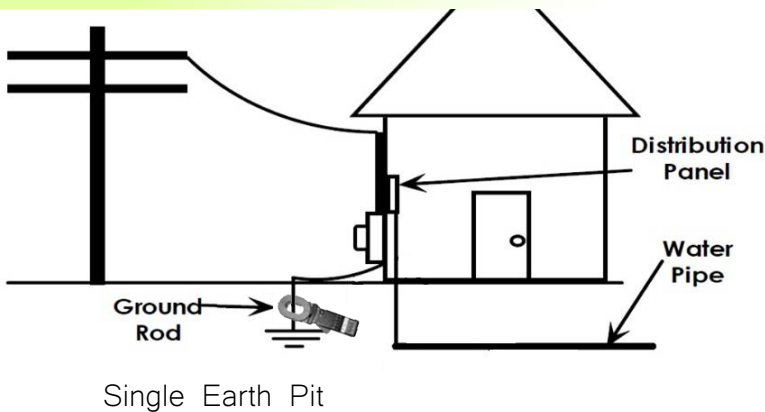
Railways:



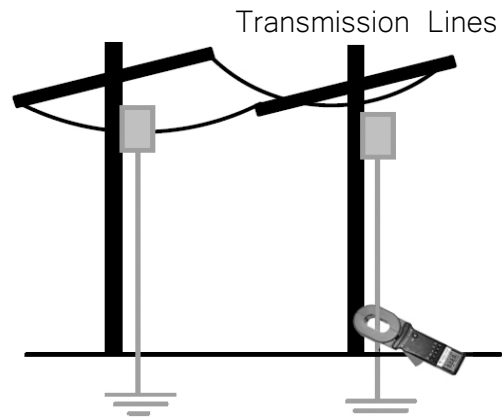
Equipment:



Distribution:



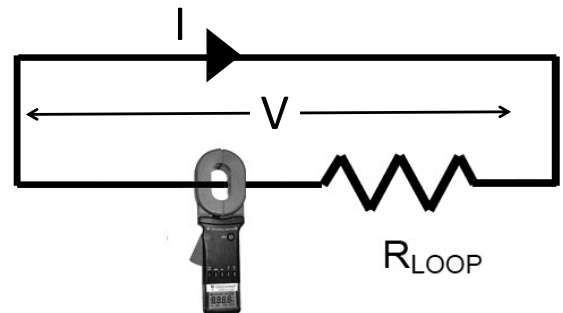
Transmission:



Principle of Operation:

KPM-CET1200 consists of 2 coils namely Voltage Generator & Current Measuring coil. The generator coil generates voltage (V) by virtue of which electrical current (I) starts flowing in the loop which is then measured by the measuring coil.

$$R_{\text{LOOP}} = V/I$$



KPM's Clamp Earth Tester (KPM-CET1200)

Technical Specifications:

Boot Time	Self-test in 0.5 second, boot instantly		Working Temperature and Humidity	-20°C-50°C ; 20%RH-90%RH
Measuring Range	0.01-1200Ω		LCD Screen	4 Digits LCD display, Screen L×W: 47mm×28.5mm
Range	Resolution	Accuracy	Clamp Size	65mm×32mm
0.01-0.099Ω	0.001Ω	±(1%+0.01Ω)	Clamp Opening Extent	32mm
0.10-0.990Ω	0.01Ω	±(1%+0.01Ω)	Tester Weight	1160g (With batteries)
1.00-49.90Ω	0.1Ω	±(1%+0.1Ω)	Clamp Dimension	L×W×T: 285mm×85mm×56mm
50.0-99.50Ω	0.5Ω	±(2%+0.5Ω)	Protection Level	Dual Insulation
100-199Ω	1Ω	±(3%+1Ω)	Structural Feature	Clamp CT
200-395Ω	5Ω	±(6%+5Ω)	Shifting	Automatic shifting
400-590Ω	10Ω	±(10%+10Ω)	External magnetic field	<40A/m
600-880Ω	20Ω	±(20%+20Ω)	External electrical field	<1V/m
900-1200Ω	30Ω	±(25%+30Ω)	Single measurement time	0.5 second
Current Range	0-20A		Resistance measurement frequency	>1kHz
Range	Resolution	Accuracy	Measured current frequency	50/60Hz Automatic measurement
0-9mA	0.1mA	±(2.5%+1mA)	Low Battery Indication	Low battery symbol displays when battery is lower than 5.3V
10-99mA	1mA	±(2.5%+5mA)	Memory Full Indication	MEM symbol blinks when all 99 sets memory is full
100-299mA	1mA	±(2.5%+10mA)	Over Range Indication	Out of range indication "OLΩ", "L0.01" or "OL A"
0.30-2.99A	10mA	±(2.5%+0.1A)	Auto Power-off	5 minutes after Boot up
3.0-9.9A	0.1A	±(2.5%+0.3A)	Power Consumption	Max 50mA either in booting up or normally working, Continuously working for 30 hours
10.0-20.0A	0.1A	±(2.5%+0.5A)	Accessories	Meter: 1 piece, Test ring: 1 Piece, Meter Suitcase: 1 Piece
Stored Data	99 sets			
Beep Alarming	Yes			
Interference Identification	With beeps and NOISE symbol blinking. Strong anti-interference ability.			
Power Consumption	Maximum 50mA, Longer battery life			
Meter Appearance	Fine appearance, More fixed structure, Easy operation			
Battery Cover	With fastening screws, Secure, Reliable, Easy battery replacement			
Function	Ground resistance test, Loop resistance test			
Power Supply	6VDC 4 PCS of AA Alkaline batteries			
Alarm Threshold Setting Range	Resistance: 1-199Ω			
Alarm Sound and Light	"Beep-beep-beep" alarm tone, Alarm Symbol Flashing, Press AL key to turn on, turn off Alarm or set Alarm Threshold			
Interference Signal Recognition	"Beep-beep-beep" tone, NOISE symbol blinking			



KPM Engineering Solutions Pvt. Ltd.

Phone: 91-124-4001088

Email: sales@kpmtek.com

Website: www.kpmtek.com

815 A, 8th Floor, Unitech Arcadia , Sector 49 ,

Pin - 122018 , Gurugram